

# Allotease

## A University Management System

Varun Karthik Guttu , Alamooru Babaiah, Vasanta Sai Prasad, Dr N SundaraRajulu

Cyber Security

School of Engineering and Technology Dhanalakshmi Srinivasan University, Trichy ,India

**Abstract-** Allot Ease is a next-gen University Management System (UMS) designed to streamline the process of the student management till the end of his / her graduation this streamline process not only engages the student side but also it adapts and manages the entire university or a college or a school. This provides an easy management of the University that zeroing the paper work from the beginning of the student enrolment till his / her graduation that enables a smoother and safer experience with a secured data and allow them to make easier of their work to experience their arrangements. It also enables them to make the work easier even without any administration rehearses. Allot Ease manages the various sector like Exam cell, HR Administration, Academics and Finance etc., eventually managing all the directories of university from student to admin as of registrar vice chancellor that enables to flexibility

### Keywords-

1. University Management System (UMS)
2. Student Information System (SIS)
3. Learning Management System (LMS)
4. Digital Transformation
5. Automation
6. AI-driven Decision Making
7. Academic Management
8. Higher Education
9. Student Enrolment
10. Cloud Computing
11. Academic Excellence
12. Administrative Challenges.

## I. INTRODUCTION

In today's Digital era, the current education system is using the more paper work that was being carried out since from the beginning of the academics that is when a student is being carried out. For the sake of efficiency of the administration and academics that is being carried out of the University [1]. It manages various academics and administration

programs that will be engaged with the allot ease that will be made for the new era of digital work instead of the unnecessary paper work. This technology integrates the modern era of automation. In this, allot ease we have integrated the platform to easily automate the scheduling and reduce the paper work that makes the user to provide an immersive experience towards the each feature that enables the productivity and improves the management and can have the scalability that

provides an immersive experience that enables to be updated. In each and every section we have huge relational database that enables us to provide the smoother experience and features to the users to reduce the man power and make faster work.

In this allot ease I have been integrated with many features that manages even from the administration, academics, student accreditation, exam cell, finance and HR management. Each of these sections are obtained with many functionalities that enables a smooth and easy adaptive methods that can be followed to emerge with digital methods this enables less paper work and reduce man power.

The allot ease manages many core functionalities that carries out with the UMS By automating tasks such as student enrolment, course management, faculty assignments, and financial transactions, a UMS improves productivity, relieves administrative burdens, and fosters effective communication among departments [2].

The allot ease allows to record the data from various sources that the entire reliability depends on the status of the university management that how the data was secure and stored in cloud and block chain method. It was enhanced with a multi layer protection to the data that need to unlock the potential more than 3 layers that will be enhanced to the allot ease algorithm which actually works as a hash technique to store passwords.

## II. WHAT ACTUALLY IT IS...?

Allot Ease: Academic Logistics & Learning Operations Tracking – Enhanced Automation System for Education In the today's era of the current education system we have seen most of the work is being done in paper work and that was being maintained in systems or any ERP Software to maintain and manage the records that will be using this during the time period of his/her education.

Most of the Universities and local colleges needed this so the entire paperwork will be reduced based on the present crisis in the digital era, most of the applications were being developed but with many

disadvantages that found towards the development in a secure method that enables the data integrity and security, that enhances the user data safety. In this latest platform we came across many platforms that actually come across the many advantages and disadvantages of the application platform.

Core Academic Capabilities & Advantages

### 1. Student Enrolment & Section Allocation

The main path of the student starts from here enabling them with a secure integration of data, it also get and verify the fetchable data that can improve the verification. In this field we are enrolling the student. based on the requirements of the university management such as it starts with the personal information containing first\_name, middle\_name, last\_name, date of birth, gender, course enrolled, mother's name, father's name, aadhar number, PAN, email, phone number, profile photo upload. And obtaining and verifying the past educational details and Transfer, migration (if applicable).

Once the data has been collected based on the enrolment of the student, the student will be automatically allotted to a section with an automated registration number followed by the university regulation with any kind of patterns that are being followed with the enrolled course with an immediate issue of the university or college ID card .

### 2. Integrated Learning Management System (LMS)

In this platform we have integrated the LMS portal that will be engaged with the sandbox coding practice video lectures and digital content of any regulation.

In this LMS portal we have designed and integrated the syllabus based lectures with topic wise and to enhance the student abilities towards academics will increase their potentiality via organizing quiz and TEM [Talent Equisition ] It provides ranking among the students and it will be easy to find the capable students that are eligible to find for any prerequisites.

### **Attendance & Timetable Optimization**

- Digital attendance tracking via manual input, biometric verification, or RFID- based systems.
- AI-powered timetable scheduling to maximize faculty and resource utilization.

### **3. Examination & Hall Assignment**

- Intelligent exam scheduling to prevent conflicts and streamline assessments.
- Automated hall allotment with randomized seating arrangements.
- Support for online exams with real-time evaluation and grading.

### **4. Academic Performance & Skill Mapping**

- AI-driven grade analysis and academic progress tracking.
- Competency-based mapping to align student skills with career aspirations.
- Predictive analytics for early intervention and tailored learning support.

### **5. Financial & Fee Management**

- End-to-end fee collection, tracking, and automated invoicing.
- Scholarship and financial aid management for enhanced accessibility and transparency.

### **6. Hostel & Library Digitization**

- Automated hostel room allocation and digital attendance monitoring.
- Smart library cataloguing for effortless book issuance and returns.

### **7. Faculty & Human Resource Administration**

- Optimized faculty workload distribution and automated scheduling.
- Payroll processing, leave management and performance tracking.

### **8. Alumni & Parental Involvement**

- Alumni networking portals to facilitate career opportunities and engagement.
- Real-time parent dashboards for monitoring student performance.

### **9. AI-Powered Insights & Institutional Analytics**

- Predictive modelling to identify potential dropouts and support student retention.
- Data-driven governance for informed academic and administrative decisions.

### **Redefining Higher Education with Allot Ease**

Allot Ease is more than just an institutional management system— it is a comprehensive, AI-enhanced ecosystem that reduces administrative complexity, improves learning outcomes, and drives digital transformation. Its secure cloud infrastructure, real-time automation, and advanced analytics empower universities to remain adaptive, student- focused, and future-ready in an ever-changing educational environment.

## **III. METHODOLOGY**

The Allot Ease University Management System serves as a centralized digital platform that seamlessly connects students, faculty, administrators, and parents. It facilitates efficient communication, data management, and academic coordination through an integrated web-based interface.

Students, parents, and faculty members can log in using their unique credentials to access relevant academic and administrative information. Students and parents share login access, allowing them to track attendance records, academic performance, examination details, and admission status. The system also enables students to retrieve their previous mark sheets, official documents, and learning resources.

Faculty members can efficiently manage course structures, schedule classes, update assessments, and track student progress. The platform also supports faculty workload management, HR administration, and payroll processing. Additionally, real-time data integration ensures transparency across all stakeholders, fostering a collaborative and well-organized educational environment.

By leveraging automation, AI-driven analytics, and cloud-based storage, Allot Ease optimizes institutional operations, reduces manual effort, and enhances academic engagement, making university management more effective, structured, and future-ready.

**Hardware Requirements:**

A basic version windows 7 till date, processor, min 2GB ram , 8GB of storage disk.

**Software Requirements:**

Software requirement: There should be a University Management System and any operating System, Visual studio. Net 2008 Enterprises.

**IV. MODELLING AND ANALYSIS**

**Level 1 of Allot-Ease image :**

In this fig 1.1 We have seen that how this manages and the data flow that how it happens to make all the automation that happens. The Level 1 Data Flow Diagram (DFD) by incorporating Examination Management, illustrating the interaction between students, faculty, and the system for exam scheduling, hall allotment, and result processing within Allot Ease UMS. This ensures a streamlined examination workflow, improving efficiency and transparency in academic operations.

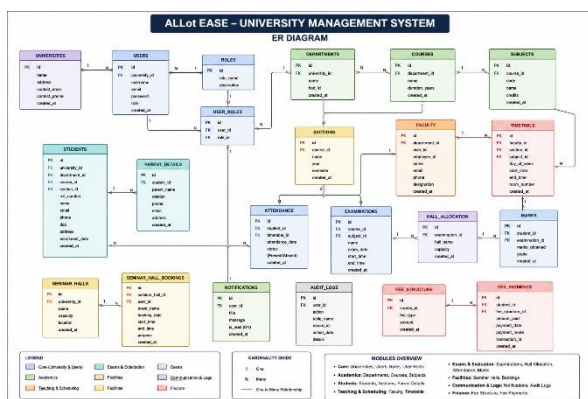


Fig 1.1 Data Flow Diagram – Level 1

**Level 2 of Allot-Ease image :**

The Level 2 Data Flow Diagram (DFD) to provide a detailed breakdown of Examination Management within Allot Ease UMS. This includes key processes such as exam registration, hall allotment, examination conduct, result processing, and notifications. The diagram highlights how students, faculty, admin, and parents interact with the system to ensure a seamless and efficient examination workflow, integrating AI-driven analysis and real-time updates for better academic management.

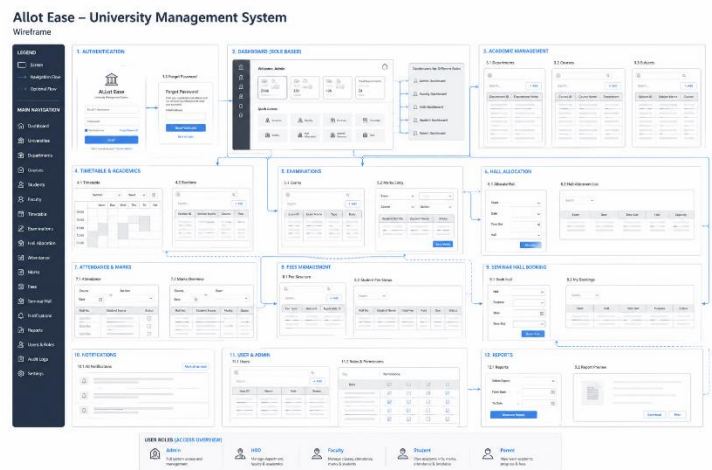


Fig 1.2 Data Flow Diagram – Level 2

Exam Hall Management System – Allot Ease The Exam Management with Hall Allotment Portal in Allot Ease ensures a seamless and efficient allocation of students to exam halls based on room availability and predefined criteria. The system automates the hall allotment process, improving accuracy, reducing manual effort, and providing real-time insights into examination logistics.

**Versions of Exam Allotment**

The system offers two modes of student allotment:

1. Manual Allotment (Ver 1.1) – Allows admins to manually enter roll numbers and assign students to exam halls.
2. Automated Allotment (Ver 1.2) – Automatically assigns students based on their class data and seating arrangements.

### Admin Panel – Functional Overview

The Admin Dashboard provides a comprehensive overview of exam-related activities, allowing administrators to monitor and manage active sessions, available classrooms, student attendance, and exam reports. The key features of the admin panel include:

- Total Classrooms – Displays the number of available rooms for exams.
- Total Students – Shows the count of students assigned for the examination.
- Active Sessions – Lists ongoing exam sessions in real time.

#### Quick Actions:

- Create New Allotment – Allows admins to start a new exam hall assignment.
- Manage Classrooms – Enables room modifications and updates.
- Generate Exam Reports – Provides attendance and exam details.
- Recent Activity Log – Tracks all actions performed within the system.

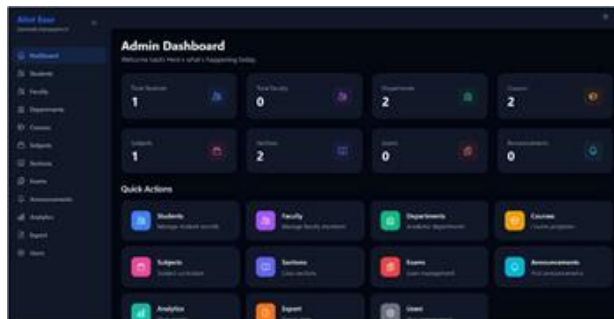


FIG 2.1 ALLOT EASE ADMIN DASHBOARD



FIG 2.2 STUDENT SECTION DASHBOARD

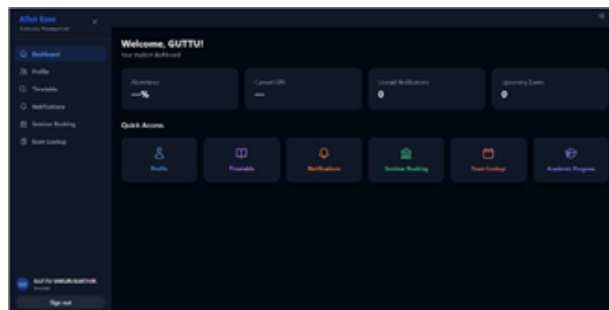


FIG 2.3 STUDENT PORTAL

In the Allot Ease system, the entire academic journey of a student is meticulously managed from the moment of university registration until graduation and placement. This comprehensive platform ensures seamless academic tracking, continuous performance evaluation, and career-oriented development, providing students with the necessary resources to excel in their educational path.

Upon registration, students' academic progress, course enrolments, attendance records, examination performances, and skill development activities are systematically monitored, allowing for personalized learning interventions where necessary. The integration of AI-driven analytics helps assess students' strengths and weaknesses,

enabling faculty to guide them effectively. Through automated progress tracking, competency mapping, and real-time feedback mechanisms, students can focus on areas that need improvement, ensuring a well-rounded academic experience.

Beyond academics, Allot Ease plays a crucial role in career preparation and placement assistance. It facilitates internships, industry collaborations, resume building, and interview preparation, aligning students with relevant job opportunities based on their competencies. The system helps students develop industry-ready skills by offering personalized training, mock assessments, and regular practice sessions. This approach ensures they gain the hands-on experience needed to transition smoothly from education to employment.

By leveraging data-driven decision-making, structured academic planning, and holistic student

development, Allot Ease fosters an environment where students are not just educated but empowered for future success. It is not merely a university management system; it is a student-centric ecosystem that supports individuals throughout their academic journey, career growth, and professional aspirations, The system helps students develop industry-ready skills through personalized training, mock assessments, and regular practice sessions, ensuring they graduate with the skills and confidence needed to thrive in their respective fields.

## V. MODULES OF ALLOT EASE

Allot Ease has many features including all the functions

- a) Application Management
- b) Built in LMS
- c) Multiple College / Schools Access
- d) Skills Assessments
- e) Evaluation
- f) Single Sign On
- g) Tests / Assessments
- h) Parent / Student / Mentor / Hod / Admin Portals
- i) Lesson Planning
- j) Online Payments
- k) Attendance
- l) Leave Management
- m) Gate Pass Management
- n) Exam Management
- o) Data Management
- p) Proctoring for Exam
- q) Automated Scheduling
- r) End-to-end Encryption
- s) Class Scheduling
- t) Hall Management
- u) Analytics and Reporting
- v) ID Generation

## VI. BRIEF ABOUT MODULES

### 1. Application Management

The Application Management module in Allot Ease streamlines the entire student admission lifecycle, from initial application submission to final enrollment. Designed

to reduce manual paperwork and improve efficiency, this feature allows prospective students to fill out online forms, upload necessary documents, and track their application status in real-time. Admins can easily verify credentials, communicate decisions, and generate institutional email IDs and registration numbers automatically. The system also flags incomplete applications and sends timely reminders. With integrated analytics, institutions can monitor application trends, seat availability, and applicant demographics, ensuring informed decision-making and improved outreach strategies.

### 2. Built-in Learning Management System (LMS)

The built-in LMS is the academic core of Allot Ease, designed to empower instructors and engage students through a centralized digital learning environment. Educators can upload lesson materials, share recorded lectures, assign tasks, and conduct live classes all within a single platform. Students benefit from streamlined access to their coursework, including assessments, grades, feedback, and progress reports. The LMS supports multimedia content, discussion forums, and real-time interactions to encourage collaborative learning. It integrates seamlessly with other modules like attendance, evaluation, and skill assessments, ensuring a coherent and uninterrupted learning experience across online and hybrid formats.

### 3. Multiple College / Schools Access

This module is crucial for educational groups or universities that oversee multiple campuses or departments. With centralized administrative control and decentralized access, Allot Ease's Multi-Institution feature allows administrators to manage operations across different colleges or schools under one umbrella. Each unit can operate semi-independently while still adhering to standardized policies and frameworks. Academic calendars, user roles, and reporting tools are customizable per institution. Data segregation ensures privacy, while cross-campus analytics help leadership track performance and resource utilization. This scalable model supports growth without compromising operational efficiency, offering both micro and macro-level management from a single dashboard.

#### **4. Skill Assessments**

The Skill Assessments module helps institutions evaluate and enhance the employability and core competencies of their students. It includes customizable tests in coding, communication, problem-solving, and domain-specific knowledge. These assessments help identify individual learning gaps and inform targeted interventions or upskilling paths. Performance analytics provide valuable insights into student readiness for internships, placements, or certifications. Institutions can also use this module to benchmark cohorts against industry standards or external examination bodies. Integrated with the LMS and analytics tools, skill assessments not only guide curriculum development but also offer students real-time feedback and a roadmap for career growth.

#### **5. Evaluation System**

The Evaluation module is engineered to automate and simplify grading processes across various formats— assignments, internal exams, projects, and practicals. Instructors can define rubrics, allocate marks digitally, and publish results instantly. It supports both formative and summative assessments and includes features for peer reviews, blind evaluations, and plagiarism detection. Students can view detailed feedback, request re- evaluations, and track academic progress over time. The system also facilitates grade moderation and compliance with institutional or accreditation standards. By integrating seamlessly with attendance, test, and skill assessment data, it offers a holistic view of academic performance at both individual and institutional levels.

#### **6. Single Sign-On (SSO)**

The Single Sign-On module in Allot Ease is designed for seamless and secure access across all platform services using just one set of login credentials. This greatly enhances user convenience while maintaining strong security by eliminating the need to remember and manage multiple login credentials. Once authenticated, users—be they students, faculty, or administrators—can navigate between modules such as attendance, LMS, hall booking, or exam management without repeated logins. SSO integrates with institutional

authentication systems, supports multi-factor authentication, and maintains session integrity across devices. For IT administrators, it simplifies account provisioning and deactivation while ensuring compliance with cybersecurity standards. It minimizes login friction, making platform access more user-friendly and secure.

#### **7. Tests / Assessments**

This module facilitates the creation and execution of a wide range of academic tests, from simple quizzes to full-scale examinations. Educators can design multiple-choice, descriptive, coding, and adaptive tests with features like timed sessions, randomized questions, negative marking, and auto-evaluation. Integrated AI tools enable smart proctoring and cheating prevention through webcam and screen monitoring. The module supports scheduled exams, instant grading, and analytics that reflect class-level and individual performance. For students, the experience is intuitive and mobile-friendly, allowing easy participation and feedback access. With secure exam environments and extensive customization options, this module is a backbone for academic integrity and performance measurement.

It provides seamless access across all modules, enhancing both usability and data protection by allowing users to log in once and securely navigate the entire platform without managing separate credentials. HODs manage departmental resources, faculty schedules, and academic reports. Admins enjoy full platform control with access to data management, scheduling, finance, and institutional analytics. These portals are interconnected yet independent, ensuring that each user sees only what's relevant to them. The system fosters transparency, engagement, and efficient communication within the educational ecosystem.

#### **9. Lesson Planning**

The Lesson Planning module enables faculty to create structured, curriculum-aligned plans that guide their teaching process throughout the academic term. It includes tools to define learning outcomes, link topics to academic calendars, and allocate instructional hours. Faculty can attach resources, assign pre-class readings, and schedule

assessments within the same module. This structure ensures consistency across subjects and helps departments standardize delivery. HODs can review and approve plans, ensuring alignment with institutional goals. Students benefit from greater transparency in what's to be covered and when. Integration with the LMS ensures that actual delivery matches planned objectives, supporting continuous quality improvement in teaching.

### **10. Online Payments**

Allot Ease's Online Payment module simplifies the financial operations of educational institutions by enabling digital fee collection. It supports various payment types including tuition, exam fees, hostel charges, and event registrations. Securely integrated with popular payment gateways, it ensures fast, reliable transactions via UPI, cards, and net banking. Each payment is automatically recorded and receipts are instantly generated. For administrators, the module provides financial reports, ledger views, and pending dues alerts. Parents and students can track payment history and upcoming dues from their portals. With features like installment plans, late fee automation, and refund processing, this module digitizes and optimizes institutional finance management.

### **11. Attendance Management**

The Attendance Management module in Allot Ease offers a digital and automated approach to tracking student and faculty attendance. It supports multiple methods—manual entry, biometric devices, RFID scanners, and mobile check-ins—ensuring flexibility and accuracy. Faculty can mark attendance in real-time, and data is instantly reflected in the student and parent portals. The system generates detailed reports, highlights attendance trends, and can trigger alerts for irregularities or shortfalls. Integration with academic performance and exam eligibility ensures that attendance is not just a routine record but a meaningful metric. This module saves administrative time, ensures compliance, and promotes accountability across all levels.

### **12. Leave Management**

The Leave Management feature in Allot Ease makes it easy and stress-free for both students and staff to apply for leave and get it approved quickly. Users can submit leave requests directly through their portals, specifying reasons and attaching supporting documents if needed. These requests are routed automatically to the appropriate authority (e.g., mentor, HOD, or admin) for review and approval. The system maintains a complete digital log of all leave applications, dates, statuses, and responses. It also integrates with the Attendance Management module to prevent discrepancies. This module promotes transparency, reduces paperwork, and ensures that legitimate leave requests are handled efficiently and without delay.

### **13. Gate Pass Management**

The Gate Pass Management module ensures controlled and secure campus access by digitally tracking student and staff movements. Students can request exit passes through the platform, which are approved by designated authorities. Once approved, QR codes or digital tokens are generated, which security personnel can scan at the gate. All exits and entries are logged in real-time, allowing administrators and parents to monitor activity. Emergency or unauthorized exits can trigger alerts. This module enhances campus safety, enforces discipline, and creates a structured exit management system that replaces outdated manual methods with a secure, automated process.

### **14. Exam Management**

The Exam Management feature in Allot Ease takes the hassle out of planning and conducting exams by giving institutions a complete, organized system to handle everything from scheduling to result announcements. It automates exam scheduling, hall ticket generation, seating arrangement, invigilator assignments, and result processing. The system allows for easy configuration of internal, mid-term, and final exams. Features such as question bank management, subject mapping, and student eligibility checks ensure smooth operations. It integrates with attendance and evaluation modules to ensure fairness and academic integrity. Students can access their exam schedules and results through

their dashboards. With built-in flexibility and compliance with academic standards, this module greatly reduces administrative workload and exam-related stress.

### **15. Data Management**

The Data Management module is the backbone of Allot Ease, responsible for securely storing and organizing all student, staff, academic, and administrative data. It ensures that data is easily accessible to authorized users while maintaining strict access controls and privacy policies. Features include automated backups, role-based access, audit trails, and customizable data views for different departments. Whether it's academic records, ID proofs, certificates, or financial details, everything is centrally stored in a structured, searchable format. This module guarantees data accuracy, eliminates redundancy, and supports compliance with institutional and government regulations, forming the foundation for reliable analytics and decision-making.

### **16. Exam Proctoring**

The Exam Proctoring module in Allot Ease ensures a secure and fair testing environment for online exams. Using AI-driven technologies, it monitors students during exams by analyzing their facial expressions, screen activity, and even the surrounding environment through their webcam. This helps prevent cheating and ensures academic integrity without the need for physical invigilators. Students are alerted if any suspicious behavior is detected, and administrators can review flagged instances for further action. For students, it's a seamless, stress-free experience that keeps the exam process transparent and trustworthy, while providing peace of mind for educators and examiners.

### **17. Automated Scheduling**

Allot Ease's Automated Scheduling module revolutionizes the way timetables and events are planned, eliminating manual work and potential conflicts. By automatically generating schedules for classes, exams, and faculty allocations based on preset parameters such as subject requirements, faculty availability, and room constraints, it saves significant administrative time. The system ensures

there are no overlaps, and it provides intelligent suggestions to optimize room usage and faculty workloads. Students can access real-time updates on their schedules, and any last-minute changes are instantly communicated to all parties. This module simplifies academic operations, improving efficiency and reducing stress for everyone involved.

### **18. End-to-End Encryption**

Security is a top priority in Allot Ease, and the End-to-End Encryption module ensures that all data—whether academic records, personal information, or financial transactions—is fully protected. With this module, data is encrypted both in transit and at rest, meaning that sensitive information remains secure, even if intercepted. Only those with the proper permissions can unlock and view the data, ensuring that it remains private and secure. This level of encryption not only meets industry standards but also provides users with peace of mind, knowing their private information is safeguarded from unauthorized access, hacking attempts, and potential data breaches.

### **19. Class Scheduling**

The Class Scheduling module within Allot Ease makes organizing and managing class schedules effortless. Faculty and administrators can easily allocate time slots based on course requirements, room availability, and faculty schedules. It also accommodates special requests such as preferred times or specific room preferences. The system ensures there are no time conflicts and automatically alerts users to any issues. For students, class schedules are updated in real-time, allowing them to track upcoming classes and make any necessary adjustments. This module

helps create a seamless, conflict-free academic experience for both students and staff while optimizing room utilization.

### **20. Hall Management**

The Hall Management module simplifies the booking and management of classrooms, seminar halls, and event spaces across the institution. With real-time availability tracking, it allows administrators and faculty to reserve spaces for

lectures, exams, meetings, or events with just a few clicks. Each booking is automatically logged, and any conflicts are flagged immediately. Users can also see usage statistics and room conditions to make informed decisions about space allocation. This module enhances campus efficiency, ensuring that every hall is used effectively and that scheduling conflicts are minimized, contributing to smoother operations and a more organized environment.

### **21. Analytics and Reporting**

The Analytics and Reporting module in Allot Ease offers powerful insights into the performance and operations of the institution. It aggregates data from all modules—attendance, exams, evaluations, fees, and more—and turns it into easy-to-understand reports and dashboards. Administrators and faculty can track student progress, identify trends, and make data-driven decisions. The system also generates custom reports, allowing users to filter and visualize data in various formats like graphs, charts, and tables. This feature helps institutions stay informed about their performance, optimize resource allocation, and improve the overall student experience by addressing areas of concern proactively.

### **22. ID Generation**

The ID Generation module simplifies the creation of digital and physical identification cards for students, staff, and faculty. It automatically generates unique IDs based on pre-set formats, ensuring consistency and accuracy across all members of the institution. The system also supports the integration of QR codes, which can be scanned for quick access to student information, attendance, or hall bookings. With customizable templates for ID cards, institutions can include the relevant details like name, photo, course, and department. This module not only streamlines the administrative process but also enhances security by providing a reliable way to identify individuals across campus.

### **23. Mobile Access**

Allot Ease recognizes the importance of mobility in today's fast-paced educational environment, which is why it includes a dedicated mobile app. The Mobile Access module provides students, faculty,

and staff with the ability to manage their academic and administrative tasks on-the-go. Users can access course materials, attend virtual classes, check grades, submit assignments, and receive instant notifications. The app is designed with a user-friendly interface, ensuring easy navigation and real-time updates. Whether it's attending a virtual exam, checking the class schedule, or managing leave requests, the mobile access feature brings the full Allot Ease experience to your fingertips anytime, anywhere.

### **24. Communication Tools**

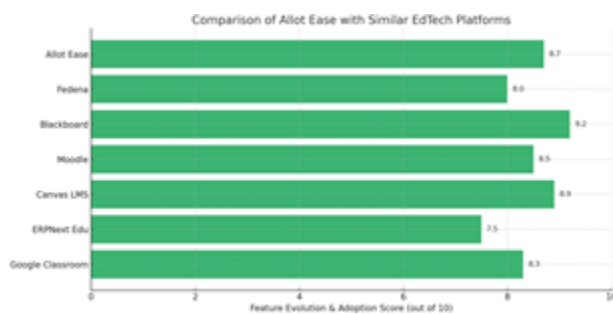
The Communication Tools module in Allot Ease ensures seamless and effective interaction between students, faculty, parents, and administrators. Whether it's a quick chat, a detailed announcement, or an urgent notice, the platform makes communication simple and organized. Students can interact with their instructors via private messages or group discussions. Parents can stay updated on their child's progress and receive important institutional notifications. Administrators can send bulk messages or email alerts to specific groups. With built-in notifications, real-time updates, and a unified messaging system, this module fosters an open line of communication across all stakeholders, ensuring no important message is missed.

### **25. Customization and Personalization**

The Customization and Personalization module in Allot Ease allows users to tailor the platform to fit their individual preferences and needs. From personal dashboards to custom notifications, each user can adjust settings to create an experience that's both efficient and enjoyable. Faculty can customize their class schedules, grading criteria, and feedback templates, while students can choose their preferred learning tools and interfaces. Admins can configure the platform's look and feel, adjusting branding elements such as colors and logos. This flexibility ensures that the platform suits the unique requirements of every institution, department, and user role, improving overall satisfaction and engagement.

## VII. UNDERSTANDING THE GROWTH OF ALLOT EASE

This bar plot highlights how different modules and features within Allot Ease are evolving in terms of adoption, usage, and impact. As shown, areas like Data Security, Analytics, and Automated Scheduling are leading the way, reflecting a strong institutional demand for smart, secure, and data-driven systems. Features like Mobile Access and Communication Tools are also gaining momentum, supporting modern academic environments that rely on connectivity and convenience.



On the other hand, modules like Hall Management and Custom Dashboards, while important, are still evolving and have room to grow in terms of widespread adoption and refinement. This data helps institutions understand which areas are most mature and which ones may benefit from further development or user training.

Overall, the chart serves as a valuable snapshot of the platform's progress, guiding future improvements and highlighting the modules that are transforming the educational experience the most.

## VIII. CONCLUSION

Allot Ease is more than just a University Management System—it is a comprehensive, student-centric ecosystem designed to streamline academic operations while fostering student growth and career success. By integrating real-time data tracking, AI-driven decision-making, and seamless automation, it ensures that every student receives personalized academic support, structured skill development, and placement assistance throughout

their educational journey. The platform not only enhances institutional efficiency but also empowers students, faculty, and administrators by simplifying complex processes and eliminating redundancies. With its scalable, secure, and future-ready architecture, Allot Ease transforms the traditional approach to education management, making universities more agile, transparent, and efficient. Ultimately, it paves the way for a digitally advanced, career-focused learning experience, ensuring that students graduate with the knowledge, skills, and confidence to excel in their chosen careers.

## REFERENCES

1. Acharya, Kamal. "College Information Management System." SSRN Electronic ASIA Journal (2024): n. pag. CONCLUSIONS
2. Acharya, Kamal. "STUDENT INFORMATION MANAGEMENT SYSTEM." Authorea Preprints (2023).
3. S. Prusty and M. Studies, "UNIVERSITY MANAGEMENT SYSTEM USING," no.