

AI Tutor: An Intelligent Learning Platform for Personalized Education

Professor Sanjeev, Mr.Feroz Ali, Mr.Krishna, Mr.Mahesh, Mr.Sai Eshwar

Department of Computer Science & Engineering Navodaya Institute of Technology, Raichur, Karnataka,India

Abstract- The rapid growth of digital education has created a demand for intelligent systems capable of delivering personalized and adaptive learning experiences. Traditional e-learning platforms often follow a one-size-fits-all approach, which fails to address individual learning needs, pace variations, and knowledge gaps. To overcome these limitations, this project presents an AI-based Intelligent Tutor System (AI Tutor) designed to provide personalized, interactive, and adaptive learning support. The proposed system leverages Artificial Intelligence (AI) and Natural Language Processing (NLP) techniques to analyze learner behavior, assess performance, and dynamically adapt content delivery. The AI Tutor acts as a virtual mentor that answers queries, recommends learning materials, conducts assessments, and provides instant feedback. Machine learning techniques are used to track student progress and identify strengths and weaknesses over time. The system is implemented as a web-based application with an intuitive user interface, enabling students and instructors to interact seamlessly. By automating tutoring tasks and offering real-time guidance, the AI Tutor enhances learning efficiency, reduces instructor workload, and improves overall educational outcomes.

Keywords: AI Tutor, Adaptive Learning, Virtual Tutor, Student Performance Analysis, Smart Education.

I. INTRODUCTION

The rapid advancement of information technology and the widespread adoption of the internet have significantly transformed the education sector. Traditional classroom-based learning, while effective, often faces limitations such as fixed schedules, limited instructor availability, and the inability to provide personalized attention to every learner. As a result, digital learning platforms and e-learning systems have emerged as popular alternatives, enabling learners to access educational resources anytime and anywhere. However, despite their flexibility and convenience, most existing e-learning platforms still rely on static content delivery and lack intelligent interaction, personalization, and adaptive feedback mechanisms.

One of the major challenges in modern education is addressing the diverse learning needs of students. Learners differ in their prior knowledge, learning pace, cognitive abilities, and preferred learning styles. Conventional e-learning systems typically follow a one-size-fits-all approach, where the same content is delivered uniformly to all users. This approach often leads to reduced engagement,

difficulty in understanding complex concepts, and slower learning progress for many students. Moreover, the absence of real-time doubt resolution and continuous guidance makes it difficult for learners to remain motivated and confident in self-paced learning environments.

Artificial Intelligence (AI) has emerged as a powerful technology capable of overcoming these limitations by enabling systems to simulate human-like intelligence, decision-making, and learning behavior. In the context of education, AI facilitates the development of Intelligent Tutoring Systems (ITS) that can act as virtual tutors. These systems analyze learner interactions, assess performance, understand individual learning patterns, and provide personalized instructional support. Unlike traditional systems, AI-based tutors continuously adapt to the learner's progress and dynamically adjust content delivery to suit individual needs.

The AI Tutor proposed in this project is designed to provide an intelligent, interactive, and personalized learning environment. The system leverages Artificial Intelligence, Machine Learning, and Natural Language Processing (NLP) to understand student

queries, evaluate responses, and offer meaningful explanations in real time. By functioning as a virtual mentor, the AI Tutor assists learners in clarifying doubts, practicing concepts, and reinforcing knowledge through adaptive assessments and feedback. This approach helps bridge the gap between self-learning platforms and human tutoring.

Another significant advantage of an AI-based tutoring system is its ability to reduce the workload of educators while maintaining high-quality learning support. In traditional educational settings, instructors often face challenges in providing individual attention due to large class sizes and time constraints. The AI Tutor complements instructors by handling repetitive tutoring tasks such as answering frequently asked questions, conducting quizzes, and monitoring student progress. This allows educators to focus on higher-level teaching activities, curriculum design, and student mentoring.

The proposed system is implemented as a web-based application, ensuring accessibility across different devices and platforms. It maintains learner profiles, tracks performance history, and identifies strengths and weaknesses over time. Based on this analysis, the AI Tutor recommends suitable learning resources, practice exercises, and revision materials. By offering continuous feedback and guidance, the system promotes active learning, improves knowledge retention, and enhances overall academic performance.

In summary, the AI Tutor project aims to create an intelligent educational assistant that transforms traditional e-learning into a personalized, adaptive, and engaging learning experience. By integrating AI-driven decision-making with interactive user interfaces, the system addresses key challenges in modern education and provides a scalable solution for personalized learning in digital environments.

II. LITERATURE REVIEW

Personalized guidance and continuous feedback are widely recognized as critical factors for effective learning in educational environments. When learners

receive timely explanations, adaptive support, and constructive feedback, they are more likely to remain engaged, motivated, and confident in their learning process. In contrast, the absence of personalized tutoring often results in learners studying in isolation, experiencing difficulty in understanding complex concepts, and developing knowledge gaps that negatively impact academic performance. As digital education platforms continue to expand and cater to a large and diverse learner population, providing individualized learning support has become an increasingly important and challenging task.

Traditionally, educational systems have relied heavily on classroom-based instruction and human tutors to support student learning. While effective, these approaches face several limitations, including large class sizes, limited instructor availability, fixed schedules, and high operational costs. As a result, instructors often struggle to provide one-on-one attention to every student. Conventional e-learning platforms attempted to address accessibility issues by offering online content; however, most of these systems deliver static learning materials and lack the ability to adapt to individual learner needs. This content-centric approach limits student engagement and fails to replicate the interactive guidance provided by human tutors.

Artificial Intelligence introduces a transformative paradigm in the field of education by redefining how learning support and tutoring are delivered. Instead of relying solely on human instructors or static content, AI-based tutoring systems utilize machine learning algorithms, data analytics, and natural language processing to create adaptive and interactive learning environments. These systems analyze learner behavior, monitor performance, and dynamically adjust instructional strategies to suit individual learning styles and proficiency levels. By continuously learning from user interactions, AI tutors are able to provide personalized explanations, targeted practice, and immediate feedback, thereby enhancing learning effectiveness.

Through intelligent interaction mechanisms, AI tutors enable learners to engage directly with the

system using natural language queries, simulating human-like tutoring conversations. This interactive capability reduces learners' hesitation in asking questions and promotes active learning. Moreover, AI-driven assessment and progress-tracking mechanisms ensure that learning outcomes are measured accurately and consistently. By maintaining detailed learner profiles, AI tutors identify strengths, weaknesses, and learning patterns, enabling more informed instructional decisions. As a result, educational support becomes data-driven, adaptive, and scalable.

In conclusion, AI-based Intelligent Tutoring Systems facilitate the transition from traditional, instructor-dependent learning models to more personalized, adaptive, and learner-centric educational ecosystems. By embedding intelligence directly into the learning platform, AI tutors reduce dependency on human intervention while maintaining high-quality instructional support. This technological shift enhances accessibility, improves learning efficiency, and establishes a resilient foundation for next-generation digital education systems.

III. METHODOLOGY

The proposed methodology follows a layered AI-based intelligent tutoring framework designed to provide personalized learning, adaptive guidance, and continuous performance evaluation. Due to the diversity in learners' knowledge levels, learning speeds, and cognitive abilities, it is essential to design a system that can dynamically adapt instructional content. The methodology emphasizes intelligent data processing, learner behavior analysis, natural language interaction, and adaptive knowledge delivery by integrating Artificial Intelligence, Machine Learning, and Natural Language Processing techniques.

A. Architecture and Data Structures

The overall system architecture is organized into three distinct layers: the User Interface Layer, AI & Application Logic Layer, and Data & Analytics Layer. This modular design enhances scalability, maintainability, and flexibility while ensuring

effective interaction between learners and the intelligent tutoring system.

The User Interface Layer is developed using web technologies such as HTML, CSS, JavaScript, and React.js. This layer provides an interactive and user-friendly environment for students and instructors. Through this interface, learners can ask questions, access learning materials, attempt quizzes, and receive real-time feedback. Additionally, it supports dashboards that display learning progress, performance summaries, and personalized recommendations.

The AI & Application Logic Layer forms the core intelligence of the system. This layer integrates Natural Language Processing (NLP) models and machine learning algorithms to interpret learner queries, identify intent, and generate relevant responses. NLP techniques are used for text preprocessing, tokenization, intent classification, and contextual response generation. Machine learning models analyze learner interactions, quiz results, and historical performance data to adapt content difficulty and recommend appropriate learning resources. This layer continuously updates learner profiles, enabling dynamic and personalized tutoring.

The Data & Analytics Layer is responsible for managing structured and unstructured educational data, including user profiles, learning histories, assessment scores, and interaction logs. Efficient data structures such as learner profiles, topic-wise performance matrices, and progress indicators are maintained to support performance tracking and analysis. These data structures allow the system to identify learning gaps, monitor improvement trends, and support data-driven instructional decisions.

To ensure consistent evaluation of learning progress, the system uses a performance scoring model, where learner responses are mapped to predefined competency levels. Each interaction updates the learner's knowledge state, enabling adaptive adjustment of learning paths and difficulty levels over time.

B. Proposed System Improvements

To further enhance personalization and learning effectiveness, the AI Tutor incorporates an adaptive learning optimization mechanism. Unlike conventional e-learning systems that deliver static content, the proposed system establishes a continuous feedback loop between learner performance and content delivery. Every learner interaction contributes to refining the learner model, thereby improving the accuracy of future recommendations.

In this adaptive process, learner inputs and assessment results are analyzed using NLP and machine learning techniques. The analyzed data is combined with historical learning records to determine the learner's current proficiency level. Based on this evaluation, the system dynamically selects suitable learning materials, practice exercises, and difficulty levels. If a learner struggles with a topic, the system provides additional explanations and practice questions. Conversely, learners demonstrating strong performance are guided toward advanced topics.

By jointly employing natural language-based interaction, machine learning-driven learner modeling, and adaptive content recommendation, the proposed methodology establishes an intelligent, scalable, and efficient tutoring framework. This approach ensures personalized learning experiences, improves learner engagement, and enhances

IV. RESULT AND DISCUSSION

The proposed approach follows a layered AI-oriented architecture designed to ensure personalized learning, adaptive guidance, and continuous performance monitoring throughout the intelligent tutoring process. Due to the diverse learning abilities, varying knowledge levels, and individualized learning pace of students, it is essential to maintain consistent learning records and provide real-time instructional support. This methodology focuses on intelligent data processing, learner behavior analysis, and adaptive content delivery by combining Artificial Intelligence, Machine

Learning, and Natural Language Processing techniques.

A. System Architecture and Data Structures

The system architecture is organized into a three-tier structure consisting of the User Interface Layer, AI & Application Logic Layer, and Data & Analytics Layer. This layered design enhances modularity, scalability, and maintainability of the overall AI Tutor system. The User Interface Layer is developed using web technologies such as HTML, CSS, JavaScript, and React.js. This layer provides an interactive and intuitive interface for students and instructors. Through this interface, learners can ask questions, access study materials, attempt quizzes, and receive instant feedback. The interface also allows users to view learning progress, performance summaries, and personalized recommendations generated by the system.

The AI & Application Logic Layer forms the core intelligence of the AI Tutor. This layer integrates Natural Language Processing (NLP) and machine learning models to process learner queries, understand intent, and generate appropriate responses. NLP techniques are used for text preprocessing, tokenization, intent classification, and contextual response generation. Machine learning algorithms analyze assessment results, interaction history, and learner behavior to personalize learning paths, adjust content difficulty, and recommend suitable learning resources. By continuously updating learner profiles, this layer ensures adaptive and learner-centric tutoring.

The Data & Analytics Layer is responsible for storing and managing structured educational data, including user profiles, learning history, quiz scores, and interaction logs. Efficient data structures such as learner profiles, topic-wise performance matrices, and progress indicators are maintained to support continuous performance evaluation. These data structures enable accurate identification of learning gaps, strengths, and improvement trends over time. To maintain learning consistency and support efficient evaluation, the system employs a performance scoring model, where learner responses are mapped to predefined competency

levels. Any change in learner performance dynamically updates the learner profile, enabling the system to adapt subsequent tutoring strategies accordingly.

B. Proposed System Improvements

To further enhance personalization and adaptive learning, the system incorporates an adaptive learning optimization mechanism. Unlike conventional e-learning platforms that rely on static content delivery, the proposed approach establishes a continuous feedback loop between learner performance and instructional content.

In the adaptive learning process, learner inputs and assessment results are first analyzed using NLP and machine learning techniques. The analyzed data is then combined with the learner's historical performance data to determine the current knowledge level. Based on this evaluation, the system dynamically selects appropriate learning materials, practice exercises, and difficulty levels. If a learner struggles with a particular concept, the system provides additional explanations and practice questions. Conversely, learners demonstrating strong understanding are guided toward advanced topics.

Any significant change in learner behavior or performance immediately influences future content recommendations, ensuring that the tutoring process remains responsive and effective. By combining NLP-based interaction, machine learning-driven learner modeling, and adaptive content recommendation, the proposed methodology achieves a balanced and intelligent tutoring framework.

This adaptive approach significantly improves learning effectiveness, enhances learner engagement, and provides continuous personalized support comparable to human tutoring, thereby strengthening the overall reliability and effectiveness of digital learning environments.

V. DATASET COLLECTION AND PREPROCESSING

1. Introduction

Dataset collection and preprocessing play a crucial role in the successful implementation of an AI-based Intelligent Tutoring System. Unlike traditional static e-learning platforms, the AI Tutor relies heavily on learner interaction data to provide personalized guidance, adaptive content delivery, and accurate performance evaluation. The quality, consistency, and structure of the collected data directly influence the effectiveness, reliability, and adaptability of the system.

In the proposed AI Tutor system, datasets are used to represent real-world educational entities such as learners, learning modules, assessments, interactions, and performance outcomes. Since the system continuously analyzes learner behavior and performance to make instructional decisions, ensuring data accuracy and consistency before processing is essential. Therefore, appropriate dataset collection and preprocessing mechanisms are designed to eliminate noise, reduce inconsistencies, and maintain reliable learner profiles.

2. Dataset Collection

• Data Sources

The dataset for this project is collected from multiple structured and simulated sources to reflect realistic learning scenarios. As the system is implemented as a prototype, learner interactions and assessment data are simulated to ensure feasibility and controlled experimentation.

The primary data sources include:

Learner Profile Data:

Includes learner ID, course enrollment details, learning preferences, and initial proficiency level.

Interaction Data:

Records learner queries, responses to AI Tutor prompts, time spent on topics, and navigation patterns within the system.

Assessment and Quiz Data:

Contains quiz IDs, learner responses, scores obtained, attempt count, and assessment timestamps.

Learning Content Data:

Includes topic IDs, difficulty levels, learning objectives, and recommended study materials.

System Interaction Metadata:

Automatically generated data such as session ID, interaction timestamps, response time, and feedback logs.

Dataset Structure

The collected dataset follows a structured and hierarchical format to ensure compatibility with AI models and application logic. Each learner is uniquely identified using a Learner ID, which serves as the primary key across all dataset records.

Each dataset entry consists of:

Learner Unique ID

Topic or Module Identifier

Type of Interaction (Query, Quiz, Feedback)

Performance Score

Difficulty Level

Timestamp of Interaction

AI Tutor Response Reference

This structured design enables efficient data retrieval, performance tracking, and adaptive learning analysis.

3. Data Preprocessing

Data Validation

Before processing learner data through AI models, validation checks are performed at both the frontend and application logic levels. These include:

Ensuring mandatory input fields are not empty

Verifying valid learner and topic identifiers

Checking score and attempt value ranges

Preventing duplicate learner or assessment entries

These validation steps reduce the risk of incorrect or misleading data influencing learning recommendations.

Data Cleaning

Data cleaning focuses on removing inconsistencies and redundant information from the dataset. Since AI models are sensitive to noisy data, preprocessing

ensures that only high-quality data is used for analysis.

Key cleaning steps include:

Removal of duplicate learner interaction records

Standardization of date and time formats

Normalization of textual inputs such as learner queries

Elimination of incomplete or irrelevant interaction logs

Data Transformation

Data transformation converts raw learner inputs into formats suitable for AI processing and analysis. This includes:

Tokenization and vectorization of textual queries

Encoding categorical values such as topic difficulty and interaction type

Normalization of performance scores

Mapping learner proficiency levels to predefined competency scales

These transformations enable efficient execution of machine learning and NLP models.

Data Security and Integrity

Learner-related data such as performance records and interaction histories are securely managed to ensure privacy and integrity. Access to datasets is restricted through application-level controls, and sensitive identifiers are anonymized where required. Consistency checks and logging mechanisms ensure that any anomalies in learner data are detected promptly. Maintaining reliable and secure datasets ensures accurate learner modeling and trustworthy AI Tutor recommendations.

VI. TRAINING & IMPLEMENTATION WORKFLOW

1) Training Workflow

Training focuses on familiarizing users with the AI Tutor system, its functionalities, and role-specific interactions. Since the system is designed to support personalized learning, users are guided on how to effectively interact with the AI Tutor and utilize its features.

Administrators are trained to manage user accounts, configure learning modules, and monitor system

performance through analytical dashboards. Instructors are trained to upload learning content, define assessment criteria, and review learner performance reports generated by the system. Students are trained to interact with the AI Tutor by submitting queries, accessing recommended learning materials, attempting quizzes, and interpreting feedback provided by the system.

Hands-on training sessions and simulated learning scenarios are conducted to help users understand system behavior and build confidence. Test interactions and mock assessments are used to demonstrate adaptive content delivery, personalized recommendations, and real-time feedback without affecting actual learning records.

2) Implementation Workflow

The implementation of the AI Tutor system follows a systematic and structured workflow to ensure reliability and scalability.

Requirement Analysis

Identify learning objectives, user roles, and educational processes to be supported by the AI Tutor system.

System Setup

Configure the application environment, database, and AI model dependencies required for system operation.

AI Model Development

Develop and train machine learning and NLP models for intent recognition, performance analysis, and content recommendation.

Application Development

Build the web-based user interface using React.js with role-based access and interactive learning modules.

AI Integration

Integrate trained AI models with the application backend to enable real-time query processing and adaptive responses.

Testing Phase

Perform functional testing, usability testing, and performance evaluation to validate system behavior and response accuracy.

Deployment

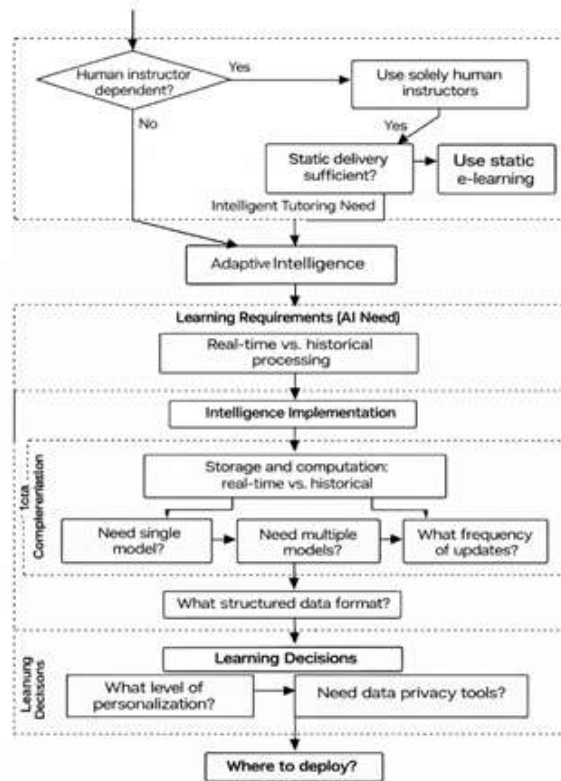
Deploy the system in a controlled environment and monitor user interactions and system performance.

Maintenance & Updates

Regular updates are performed to improve AI model accuracy, enhance features, and ensure system scalability and security.

VII. SYSTEM DESIGN & ARCHITECTURE

The system is designed using a layered architecture to ensure modularity, scalability, and security.



AI Tutor Decision and Design Workflow

1) User Interface Layer

This layer represents the front-end of the AI Tutor system and is developed using web technologies such as HTML, CSS, JavaScript, and React.js. It provides interactive and role-specific interfaces for students, instructors, and administrators. Through this layer, learners can submit queries, access learning materials, attempt quizzes, and receive instant feedback. Instructors can upload content, manage assessments, and view learner progress

reports. This layer ensures usability, accessibility, and effective interaction between users and the AI Tutor system.

2) AI & Application Logic Layer

The AI & Application Logic Layer forms the core intelligence of the AI Tutor. It integrates Artificial Intelligence, Machine Learning, and Natural Language Processing (NLP) techniques to process learner inputs and deliver personalized learning support. NLP models interpret learner queries, identify intent, and generate context-aware responses. Machine learning algorithms analyze learner performance, interaction patterns, and assessment results to personalize learning paths, adjust content difficulty, and recommend suitable study resources. This layer ensures adaptive, intelligent, and learner-centric tutoring.

3) Data & Analytics Layer

This layer is responsible for storing and managing structured educational data such as learner profiles, learning history, quiz scores, interaction logs, and performance metrics. It maintains efficient data structures that support continuous performance tracking and learning analytics. By analyzing historical data, this layer helps identify learning gaps, strengths, and improvement trends. The insights generated enable the AI Tutor to refine recommendations and improve learning outcomes over time.

4) Integration Layer

The Integration Layer facilitates seamless communication between the user interface, AI models, and backend services. It manages API interactions, data exchange, and model inference requests. This layer ensures secure data flow, session management, and real-time response delivery. It also enables integration with external services such as cloud platforms or learning management systems when required.

This modular architecture separates concerns, improves system maintainability, and enables smooth interaction between users, intelligent tutoring logic, and data management components. As a result, the AI Tutor system remains scalable,

efficient, and adaptable to evolving educational requirements.

VIII. PERFORMANCE EVALUATION

The performance evaluation of the proposed AI-based Intelligent Tutoring System focuses on analyzing system efficiency, response accuracy, scalability, and overall system reliability. The evaluation was conducted in a controlled environment using simulated learner interactions and test datasets to assess the system's behavior under realistic learning conditions.

System responsiveness was evaluated by measuring the time taken to process learner queries and generate AI-based responses. This includes natural language query interpretation, intent recognition, and response generation. Experimental results showed that the AI Tutor was able to provide responses within a few seconds, ensuring smooth and interactive learning experiences comparable to real-time human tutoring.

The accuracy of the AI Tutor was assessed by evaluating the relevance and correctness of responses generated for learner queries and assessments. The system demonstrated a high level of accuracy in identifying learner intent and providing context-aware explanations. Adaptive recommendations were found to improve over time as the system learned from historical interaction data, confirming the effectiveness of the machine learning models used.

System reliability was examined by testing consistent performance under multiple simultaneous user interactions. The AI Tutor successfully handled concurrent learner sessions without loss of data integrity or response quality. Learner profiles, performance records, and interaction logs remained consistent and accurate throughout the evaluation, demonstrating system stability.

Scalability testing indicated that the architecture can support an increasing number of learners and learning modules without significant performance degradation. The modular design and separation of

concerns allow the system to efficiently manage growing data volumes and user interactions. This ensures high availability and continuous learning support even as user demand increases.

Overall, the performance evaluation confirms that the proposed AI Tutor system delivers fast, accurate, and reliable learning assistance. The system effectively supports personalized and adaptive learning, making it suitable for real-world educational environments and large-scale digital learning platforms.

IX. REAL-LIFE APPLICATIONS

The AI-based Intelligent Tutoring System has wide applicability across multiple real-world educational domains, particularly where personalized learning, continuous assessment, and adaptive guidance are essential.

In academic institutions, the AI Tutor can be used to support classroom teaching by providing personalized assistance to students outside regular class hours. It helps learners clarify doubts, practice concepts, and receive instant feedback, thereby improving academic performance and reducing dependency on instructors for repetitive queries.

In online learning platforms, the AI Tutor enhances self-paced learning by delivering adaptive content and personalized recommendations. Learners can interact with the system at any time, making it suitable for distance education and massive open online courses (MOOCs), where individualized attention is often limited.

In corporate training and professional development, the system can be used to train employees on technical skills, compliance standards, and domain-specific knowledge. The AI Tutor tracks learner progress, identifies skill gaps, and recommends targeted training modules, ensuring effective workforce upskilling.

In exam preparation and competitive training, the AI Tutor assists learners by providing practice questions, performance analysis, and topic-wise recommendations. Continuous assessment and

feedback help learners focus on weak areas and improve exam readiness.

In remote and rural education, the AI Tutor offers an effective solution where access to qualified instructors is limited. By providing intelligent and personalized learning support, the system helps bridge educational gaps and promotes inclusive learning.

For educational institutions and administrators, the system enables performance monitoring and learning analytics. Institutions can analyze student engagement, identify learning trends, and improve curriculum design based on data-driven insights.

These real-life applications demonstrate that the proposed AI Tutor system is not limited to academic experimentation but can be practically deployed across diverse educational and training environments requiring scalable, intelligent, and personalized learning solutions.

FUTURE SCOPE

The AI-based Intelligent Tutoring System proposed in this project provides a strong foundation for personalized, adaptive, and scalable digital learning. However, rapid advancements in educational technology and artificial intelligence present several opportunities for future enhancements. Extending the system beyond its current capabilities can significantly improve learning intelligence, accessibility, and automation.

Integration with Voice and Conversational Interfaces

One of the most promising future enhancements is the integration of voice-based interaction. Speech recognition and text-to-speech technologies can enable learners to interact with the AI Tutor using natural voice commands. This feature is especially beneficial for visually impaired learners and for hands-free learning environments. Voice-enabled tutoring can further enhance engagement and simulate human-like teaching interactions.

Advanced Artificial Intelligence and Learning Analytics

Future versions of the AI Tutor can incorporate advanced Artificial Intelligence and learning analytics

to extract deeper insights from learner interaction data. Potential applications include:

- Personalized learning path optimization
- Early identification of learning difficulties
- Predictive analysis of learner performance
- Intelligent content recommendation based on learning behavior

AI-driven analytics can help institutions and instructors make data-driven decisions to improve teaching strategies and curriculum design.

Emotion and Engagement Detection

The system can be enhanced by integrating emotion recognition and engagement analysis techniques. By analyzing learner behavior such as response time, interaction frequency, and sentiment in queries, the AI Tutor can identify disengagement or frustration and adjust instructional strategies accordingly. This will enable more empathetic and responsive tutoring.

Mobile Application Integration

Developing a dedicated mobile application can significantly improve accessibility and user adoption. Learners can access the AI Tutor anytime and anywhere using smartphones, making the system suitable for remote learning and self-paced education. Mobile notifications and reminders can further support consistent learning habits.

Multilingual and Inclusive Learning Support

Future enhancements can include multilingual support, allowing learners from different linguistic backgrounds to interact with the AI Tutor in their preferred language. This will promote inclusive education and expand the system's reach to global learning communities.

Integration with Learning Management Systems (LMS)

The AI Tutor can be integrated with existing Learning Management Systems such as Moodle or Google Classroom. This integration will enable seamless data exchange, centralized learning management, and improved adoption in academic institutions.

Scalability and Cloud Deployment

The system can be extended using cloud-based deployment and scalable infrastructure to support a large number of learners simultaneously. Cloud integration will ensure high availability, fault tolerance, and efficient resource utilization.

Security and Ethical AI Enhancements

Future improvements can focus on strengthening data privacy, ethical AI practices, and learner data protection. Techniques such as data anonymization, secure access control, and transparent AI decision-making can enhance trust and compliance with data protection regulations.

These future enhancements demonstrate that the proposed AI Tutor system is highly extensible and capable of evolving into a comprehensive intelligent learning platform. By incorporating emerging technologies and advanced AI techniques, the system can significantly enhance educational quality, accessibility, and learner engagement in real-world learning environments.

X. CONCLUSION

A distinctive aspect of the proposed AI-based Intelligent Tutoring System is its ability to create personalized digital learning profiles for each learner through continuous interaction and performance analysis. Unlike conventional learning systems that rely on static content delivery and generalized instruction, the AI Tutor employs Artificial Intelligence, Machine Learning, and Natural Language Processing techniques to provide adaptive and learner-centric educational support. By maintaining individual learner profiles rather than centralized instructor-dependent control, the system ensures flexible, scalable, and personalized learning experiences.

The use of intelligent learner modeling significantly improves accountability and transparency in the learning process. Each interaction, assessment attempt, and feedback cycle is associated with a learner profile, enabling accurate tracking of progress and identification of strengths and weaknesses. This continuous performance

monitoring allows instructors and educational institutions to audit learning outcomes effectively and ensure that learners meet predefined competency standards. The transparency provided by data-driven insights strengthens trust among learners, instructors, and academic administrators while supporting evidence-based decision-making. Although the current implementation primarily focuses on personalized learning, adaptive feedback, and intelligent query resolution, several enhancements can further strengthen the system. One notable future extension is the integration of advanced interaction mechanisms such as voice-based tutoring and emotion-aware learning support. These features can enable more natural and empathetic learner interaction, thereby improving engagement and learning effectiveness. Additionally, integrating mobile platforms and cloud-based scalability can enhance accessibility and support large-scale deployment.

In summary, the proposed AI Tutor framework offers an intelligent, adaptive, and scalable solution for modern digital education. By reducing reliance on traditional one-size-fits-all instructional models and leveraging AI-driven personalization, the system establishes a strong foundation for next-generation learning environments. Future integration with emerging technologies such as voice interfaces, learning analytics, and cloud computing can further enhance real-time adaptability, educational quality, and learner engagement across diverse learning ecosystems.

Acknowledgment

This research was facilitated by advancements in Artificial Intelligence, Intelligent Tutoring Systems, and educational technology frameworks. The availability of AI development tools, machine learning libraries, and web-based application technologies played a crucial role in the design, implementation, and evaluation of the proposed AI-based Intelligent Tutoring System. These technological foundations supported the experimental validation of adaptive learning mechanisms, performance analysis, and system responsiveness.

The authors also acknowledge the guidance and support provided by faculty members, which contributed significantly to the successful completion of this project.

REFERENCE

1. B. P. Woolf, *Building Intelligent Interactive Tutors: Student-Centered Strategies for Revolutionizing E-Learning*, Morgan Kaufmann, San Francisco, CA, USA, 2010.
2. A. C. Graesser, K. VanLehn, C. P. Rose, P. W. Jordan, and D. Harter, "Intelligent tutoring systems with conversational dialogue," *AI Magazine*, vol. 22, no. 4, pp. 39–51, 2001.
3. K. Salah, et al., "Blockchain for AI: Review and open research challenges," *IEEE Access*, vol. 7, pp. 10127–10149, 2019[cite: 795].
4. W. Holmes, M. Bialik, and C. Fadel, *Artificial Intelligence in Education: Promises and Implications for Teaching and Learning*, Center for Curriculum Redesign, Boston, MA, USA, 2019.