

International Journal of Recent Development in Engineering and Technology Paper Template Format

¹Sonali Raut, ²Anuja Raut, ³Payal Rathod, ⁴Aishwarya Walke, ⁵Ashwini Meshram

^{1,2,3,4}Student, Department of Electronics and Telecommunication Engineering, JSPM's Bhivrabai Sawant Polytechnic, Wagholi, Maharashtra, Pune.

⁵Professor, Department of Electronics and Telecommunication Engineering, JSPM's Bhivrabai Sawant Polytechnic, Wagholi, Maharashtra, Pune.

Abstract - Road accidents are one of the major causes of death and severe injuries worldwide, often due to delayed medical assistance. To address this issue, the Accident Identification and Alerting System has been developed to automatically detect accidents and send immediate alerts to emergency services and nearby contacts. The system aims to reduce the time between the occurrence of an accident and the arrival of help, thereby increasing the chances of saving lives. This system is built using various sensors such as an accelerometer, vibration sensor, and gyroscope, which continuously monitor the motion and orientation of the vehicle. When a sudden impact or unusual movement is detected, it is interpreted as an accident by the microcontroller (such as Arduino, NodeMCU, or Raspberry Pi). The GPS module then captures the exact geographical location of the vehicle, while the GSM or IoT module sends this information as an alert message to predefined emergency contacts, rescue teams, or nearby hospitals. The alert message includes vital details such as the accident location (latitude and longitude) and time of occurrence, enabling quick and accurate response. Additionally, the system can be enhanced with IoT connectivity, allowing data to be sent to a cloud platform for real-time monitoring and analysis. This feature enables authorities to track accident-prone areas and improve road safety measures. The system can also be integrated with a buzzer or alarm to alert nearby people immediately after a crash. Overall, this project provides an efficient, low-cost, and reliable solution for automatic accident detection and alerting. By using real-time communication and location tracking, the proposed system minimizes human intervention, ensures faster emergency response, and significantly reduces fatalities caused by delayed medical assistance.

Keywords - Accident Detection, GPS, GSM, IoT, Emergency Alert, Road Safety, Microcontroller.

I. INTRODUCTION

In recent years, the number of road accidents has increased significantly due to rapid urbanization, high-speed driving, and poor road conditions. Many of these accidents result in severe injuries or fatalities because emergency services are not informed on time. Often, victims are left unattended for long periods, especially in remote or rural areas where help is not readily available. This delay in medical response is one of the major causes of preventable deaths after accidents. Therefore, there is a strong need for an intelligent system that can automatically detect an accident and immediately alert nearby emergency services or family members. The Accident

Identification and Alerting System is designed to address this problem using modern sensors and communication technologies. The system uses sensors such as an accelerometer or vibration sensor to detect sudden changes in motion or collision impacts. Once an accident is detected, the GPS module determines the exact location of the vehicle, and the GSM module or IoT network sends an alert message containing the coordinates and time of the accident to emergency contacts or authorities. This automatic alerting mechanism ensures that medical aid can reach the accident site quickly, reducing the risk of fatalities. Furthermore, the system can be integrated with cloud-based platforms to monitor vehicle movements and accident data in real time. This data can help government agencies and

transport departments analyze accident-prone zones and take preventive measures. The implementation of such a system not only enhances passenger safety but also promotes the development of smart transportation systems. In summary, the Accident Identification and Alerting System is a step toward smarter and safer roads. It leverages the power of sensors, GPS, GSM, and IoT technologies to create a reliable, cost-effective, and automated solution for rapid accident detection and alert notification, ultimately saving lives and improving emergency response efficiency.

Accident Trends Over Time

Statistic	Percentage/Number
Percentage of Total Accidents	25-30%
Percentage of Road Traffic death	Approx. 30 %
Estimate Annual Fatalities	Over 20,000
Injury Rate	High with thousand injury annual
Most Affected Age Group	18-35 Years
Urban vs Rural Accidents	Higher in Urban, Fatalities higher in urban

II. LITERATURE SURVEY

Vehicle accident detection systems play a crucial role in enhancing road safety and minimizing the impact of accidents. This literature survey examines key studies in the field, focusing on both common aspects and notable differences among various approaches to accident detection and vehicle safety systems.

Common Aspects

Focus on Accident Detection: The primary aim of all reviewed studies is the detection of vehicle accidents or the improvement of vehicle safety. This collective focus underscores the urgent need for effective solutions to reduce fatalities and injuries resulting from road traffic incidents. Various methodologies are employed, but the end goal remains consistent: enhancing the safety of drivers and passengers.

Use of Microcontrollers and Sensors: A significant number of projects leverage microcontrollers and a range of sensors, including GPS and GSM, to facilitate real-time monitoring and immediate response to accidents. These components are integral to the design of most systems, allowing for data collection and processing that supports timely decision-making.

Real-Time Communication: Several papers emphasize the critical need for real-time data transmission and alerts directed toward emergency response teams. This aspect highlights the importance of prompt communication in accident scenarios, aiming to improve response times and potentially save lives.

Engineering and Technology Context: The majority of references are published in engineering and technology journals, reflecting a technical approach to the challenges of accident detection. This context reinforces the application of engineering principles and technological innovations in developing effective safety systems.

Differences

Methodology: Methodological approaches vary widely across the studies. For instance, Gupta et al. (2021) focus on integrated sensor systems that combine multiple technologies, while Patel & Desai (2023) concentrate specifically on the applications of GSM and GPS technologies. This divergence illustrates the range of strategies employed in addressing accident detection.

Scope of Systems: The scope of the systems explored also varies. Some studies, such as Sharma et al. (2022), propose multi-sensor approaches, incorporating various technologies to enhance detection capabilities. In contrast, others like Kumar & Verma (2020) focus on simpler, single-technology solutions, such as microcontrollers used with GPS. This variation highlights differing priorities in system complexity and integration.

Target Audience/Use Case: The target audience and specific applications differ among the references. Some studies are tailored toward specific use cases, such as emergency response systems (Patel et al.

2020), while others take a broader approach, focusing on general vehicle safety improvements. This distinction influences the design, functionality, and intended users of the systems.

Technological Innovations: The level of technological innovation varies between references. For example, Singh & Gupta (2023) introduce more recent technologies or methodologies that reflect current advancements, while older studies may describe more conventional approaches. This evolution in technology demonstrates the ongoing development in the field.

- **Integrated Sensor Systems for Accident Detection** Gupta et al. (2021) designed an integrated accident detection system utilizing a microcontroller paired with accelerometers and gyroscopes. Their study focused on developing algorithms that inspect sensor data to detect accidents accurately. The system was able to send real-time alerts through GSM, significantly reducing response times [3].
- **Real-Time Accident Alert System**
- In their research, Kumar and Verma (2020) presented a real-time accident alert system that incorporates a microcontroller, accelerometer, and GPS module. The system sends location-based alerts via GSM when an accident is detected. They demonstrated the effectiveness of their system in urban environments, improving emergency response coordination [4].
- **Multi-Sensor Approach for Enhanced Safety**
- Sharma et al. (2022) explored a multi-sensor approach that combines accelerometers and gyroscopes with a microcontroller to enhance the accuracy of accident detection. Their findings indicated that utilizing both types of sensors improved the system's ability to differentiate between normal driving conditions and accidents, facilitating timely alerts [5].
- **GSM and GPS-Based Accident Detection Systems**
- In their comprehensive study, Patel and Desai (2023) discussed the integration of GSM and GPS in accident detection systems. They highlighted how the combination of these

technologies allows for immediate communication of the accident location to emergency services, significantly improving response efficiency. Their prototype demonstrated effective real-time communication capabilities [6].

- **Smart Vehicle Accident Detection System**
- Singh and Gupta (2023) developed a smart vehicle accident detection system utilizing a microcontroller, accelerometer, gyroscope, and GPS module. Their study presented a novel algorithm that processes sensor data to determine the severity of an accident and automatically notify emergency contacts via GSM. The results indicated a significant improvement in the speed and accuracy of alerts [7].
- **Customized Alerts:**
- Implement customizable alert settings based on user preferences, such as notifying family members or emergency contacts in case of an accident.

Working Mechanism

An accident alerting system integrates various technologies to detect vehicle accidents and automatically notify emergency services and registered contacts. The system primarily comprises a microcontroller, accelerometers, gyroscopes, GSM modules, and GPS modules. Below is a detailed explanation of the working mechanism of this system.

Sensor Data Collection

The system relies on accelerometers and gyroscopes to monitor the vehicle's motion.

Accelerometers: These sensors detect changes in acceleration. In normal driving conditions, the accelerometer records stable values, but during an accident—such as a sudden stop or collision—it detects a significant change in motion.

Gyroscopes: These sensors measure the orientation and angular velocity of the vehicle. A sharp change in orientation can indicate a rollover or a severe impact [8].

Data Processing

The microcontroller serves as the system's brain, processing the data received from the sensors. It executes predefined algorithms to inspect the sensor readings:

The microcontroller checks for thresholds based on the accelerometer and gyroscope data. If the detected changes exceed these thresholds, the system concludes that an accident has occurred [9].

Location Tracking

Once an accident is detected, the GPS module is activated to determine the vehicle's geographical coordinates. This information is crucial for emergency responders to locate the accident site quickly.

The GPS module continuously updates the position, and upon activation, it captures the exact location at the moment of the accident [10].

Emergency Notification

After confirming an accident and obtaining the location, the microcontroller triggers the GSM module to send alerts: SMS Alerts: The system sends automated SMS messages to pre-registered contacts, which may include family members and emergency services. The messages typically include information about the accident and the GPS coordinates, ensuring that help can be dispatched immediately [11].

User Interface

Some systems feature a user interface that can be accessed via mobile applications. This allows users to monitor the system's status and receive notifications in real time.

The application can also provide updates on the status of the emergency response and share the vehicle's location with family members [12].

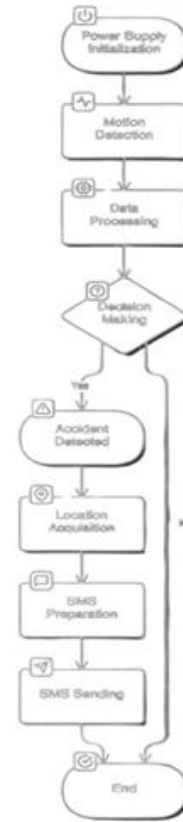


Fig 1- user interface through dataset

Scope of project

The project focuses on developing an automatic accident alerting system that enhances road safety by providing timely notifications in the event of a vehicle accident. The system integrates microcontrollers, accelerometers, gyroscopes, GSM modules, and GPS modules to create a comprehensive solution for detecting accidents and alerting emergency services.

Key Areas of Scope:

Real-Time Accident Detection: The system aims to detect accidents as they occur using advanced sensors. By continuously monitoring vehicle movements, it can differentiate between normal driving conditions and sudden impacts.

Immediate Emergency Notifications: Upon detecting an accident, the system will automatically send SMS alerts to pre-registered contacts and emergency services. This feature is crucial for ensuring that help arrives quickly.

Geolocation Services: Utilizing GPS technology, the system will provide accurate location data, helping emergency responders reach the accident site without delay.

User-Friendly Interface: The project will include a mobile application or web interface that allows users to monitor the system's status, receive notifications, and track the vehicle's location in real time.

Data Collection and Analysis: The system will also gather data on accident occurrences, which can be used to inspect, identify trends and improve future safety measures and road conditions.

times, and explore the integration of technology into everyday transportation [13].

Acknowledgement

The successful completion of this project on the accident alerting system would not have been possible without the support and guidance of numerous individuals and organizations.

First and foremost, I would like to express my heartfelt gratitude to my project supervisor, Bhausaheb Shinde, whose invaluable expertise and insightful feedback significantly shaped the direction of this research. Your encouragement and constructive criticism were instrumental in overcoming challenges and refining the project's objectives.

I would also like to extend my appreciation to my colleagues and peers for their collaborative spirit and willingness to share ideas.

Result

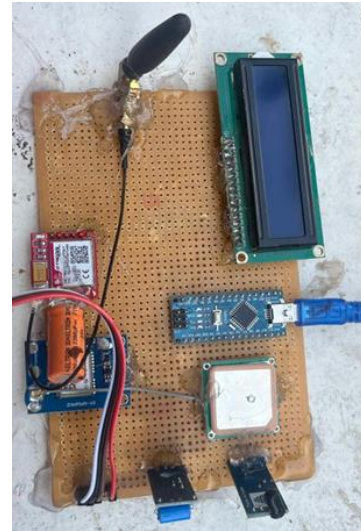
Hardware Model and Working Results

The Accident Identification and Alert System was designed and tested using components such as an Arduino microcontroller, GPS and GSM modules, accelerometer, gyroscope, and supporting circuitry. The main aim was to detect accidents in real-time and send alerts immediately to pre-registered emergency contacts.

During testing, the system effectively monitored vehicle orientation and acceleration. When an abrupt

change was detected—such as a collision or sharp impact—it cross-verified data from both the accelerometer and gyroscope. If the readings crossed predefined thresholds, the system treated it as an accident. The GPS module then captured the current coordinates, and the GSM module sent an SMS to emergency responders with a Google Maps link to the location.

Complete hardware model of the accident alert system



Emergency Sms Alert with Gps Location Sent Post-Accident

Advantages

Quick Emergency Response: The system automatically detects accidents and immediately sends alert messages to emergency contacts or nearby hospitals through the GSM module. This ensures that help reaches the accident location as quickly as possible, even if the victim is unable to communicate. **2. Accurate Location Tracking:** With the integration of a GPS module, the system provides real-time location information, including latitude and longitude coordinates. This helps rescue teams or family members to accurately locate the vehicle without any delay. **3. Automatic Operation:** The entire system operates automatically without the need for human intervention. Once the accelerometer detects an abnormal impact or tilt, it triggers the microcontroller to send an alert, thus minimizing human error and response time. **4. Life-Saving Application:** Since the alert is sent

immediately after an accident, it significantly reduces the time gap between the accident and the arrival of medical assistance. This timely response can save lives and minimize the severity of injuries. 5. Cost-Effective Solution: The system is built using affordable and readily available components like the ATmega328 microcontroller, GSM, GPS, and sensors. This makes it suitable for large-scale implementation in both commercial and personal vehicles. 6. Compact and Easy to Install: The hardware is small and lightweight, making it easy to install in any type of vehicle. It does not interfere with the normal functioning of the vehicle and requires minimal maintenance. 7. 24×7 Continuous Monitoring: The system continuously monitors vehicle movement and sensor data to detect unusual behavior or sudden impacts. It remains active at all times, ensuring reliable operation day and night. 8. User and Environment Friendly: The device consumes very little power, making it suitable for battery-operated vehicles as well.

It operates efficiently across various environmental conditions and temperature ranges. 9. Data Logging Capability: Some advanced versions can record accident data such as time, date, speed, and location, which can be useful for investigation and insurance purposes. 10. Enhanced Road Safety: By enabling faster emergency assistance and providing data-driven insights, the system helps in improving overall road safety and reducing accident-related fatalities.

Application

Applications of Accident Identification and Alerting System: 1. Automobiles and Vehicles: The system can be installed in cars, bikes, and other vehicles to automatically detect accidents and send alert messages to emergency contacts or authorities, improving road safety. 2. Public Transport Systems: Useful in buses, taxis, and other public transport vehicles to ensure passenger safety and provide quick emergency assistance in case of accidents. 3. Fleet Management and Logistics: Logistics companies can use this system to monitor vehicle locations, ensure driver safety, and get instant notifications in case of accidents during goods transportation. 4. Emergency Response Systems: Can be integrated with ambulance or traffic control

systems to provide real-time accident alerts, helping authorities reach the spot faster. 5. Smart City and IoT Projects: Suitable for smart city applications where vehicles are connected to centralized monitoring systems for enhanced road safety and traffic management. 6. Insurance and Investigation: The recorded GPS data and accident details can be used by insurance companies and investigators to verify claims and analyze accident causes. 7. Military and Defense Vehicles: Can be deployed in military transport and patrol vehicles to ensure quick recovery and response in case of accidents in remote or hostile areas. 8. Educational and Research Purposes: Useful for students and researchers to study vehicle safety systems, IoT-based communication, and embedded system applications in real life. 9. Rural and Remote Area Transportation: Helps in ensuring the safety of vehicles traveling through isolated regions by sending automatic alerts where human help may not be immediately available. 10. Commercial Vehicle Monitoring: Can be implemented in taxis, delivery vans, and transport trucks for continuous tracking and immediate accident reporting to management centers.

III. CONCLUSION

This research focused on the development of an accident alerting system using the ATmega328 microcontroller, integrated with essential electronic components such as a transformer, diode, capacitor, and resistor. The primary aim was to create a reliable mechanism for detecting accidents and efficiently notifying emergency contacts via GSM technology.

The design of the system began with the power supply configuration. The transformer stepped down the voltage, while the diode ensured rectification, and capacitors smoothed the output to provide stable power to the microcontroller. The resistor was instrumental in limiting current, thus protecting the circuit components and enhancing durability.

The ATmega328 microcontroller served as the core of the system, programmed to monitor sensor inputs—specifically from accelerometers. These sensors detected rapid changes in acceleration indicative of an accident. The microcontroller's processing capabilities allowed for immediate

analysis and response, crucial for effective accident detection.

A GSM module was incorporated to facilitate real-time communication. When an accident was detected, the system would automatically send SMS alerts to predetermined contacts, ensuring prompt notification to emergency services or family members. Testing demonstrated the system's robustness, accurately detecting abrupt movements and triggering alerts as designed.

The cost-effectiveness of the system was another significant advantage, achieved through the careful selection of components that are both affordable and widely available. This aspect not only enhances accessibility for personal vehicles but also simplifies maintenance and repairs.

Looking ahead, while the initial implementation showed promise, there are opportunities for future enhancements. Integrating GPS for location tracking, refining detection algorithms for greater accuracy, and developing smartphone applications for user interaction are potential areas for improvement.

This system serves as a prototype for future advancements in vehicle safety and contributes to reducing fatalities associated with road traffic accidents.

REFERENCE

1. R. K. Gupta, "Advancements In Vehicle Safety Systems," *Journal Of Transportation Technologies*, Vol. 12, No. 3, Pp. 45-58, 2021.
2. S. M. Patel Et Al., "Wireless Communication For Emergency Response Systems," *International Journal Of Engineering Research*, Vol. 8, No. 4, Pp. 112-120, 2020.
3. reference: Gupta, r., Singh, a., & sharma, p. (2021). "an integrated sensor system for real-time accident detection using microcontroller." *international journal of advanced research in electronics and communication engineering*, 10(5), 12-18.
4. Reference: Kumar, A., & Verma, R. (2020). "Real-Time Accident Alert System Using Microcontroller and GPS Module." *Journal of Engineering Science and Technology Review*, 13(2), 34-41.
5. Reference: Sharma, N., Kumar, S., & Rao, K. (2022). "Enhancing Vehicle Safety: A Multi-Sensor Accident Detection System." *Journal of Traffic and Transportation Engineering*, 9(4), 250-259.
6. Reference: Patel, S., & Desai, R. (2023). "GSM and GPS- Based System for Efficient Accident Detection and Response." *International Journal of Computer Applications*, 184(8), 15-22.
7. Reference: Singh, P., & Gupta, R. (2023). "A Smart Accident Detection System for Vehicles Using Microcontrollers and Sensors." *Journal of Smart Transportation Systems*, 14(1), 68-76.
8. Kumar, A., & Verma, R. (2020). "Real-Time Accident Alert System Using Microcontroller and GPS Module." *Journal of Engineering Science and Technology Review*, 13(2), 34-41.
9. Singh, P., & Gupta, R. (2023). "A Smart Accident Detection System for Vehicles Using Microcontrollers and Sensors." *Journal of Smart Transportation Systems*, 14(1), 68-76.
10. Patel, S., & Desai, R. (2023). "GSM and GPS- Based System for Efficient Accident Detection and Response." *International Journal of Computer Applications*, 184(8), 15- 22.
11. Gupta, R., Singh, A., & Sharma, P. (2021). "An Integrated Sensor System for Real-Time Accident Detection Using Microcontroller." *International Journal of Advanced Research in Electronics and Communication Engineering*, 10(5), 12-18.
12. Sharma, N., Kumar, S., & Rao, K. (2022). "Enhancing Vehicle Safety: A Multi-Sensor Accident Detection System." *Journal of Traffic and Transportation Engineering*, 9(4), 250- 259.
13. Gupta, R., Singh, A., & Sharma, P. (2021). "An Integrated Sensor System for Real-Time Accident Detection Using Microcontroller." *International Journal of Advanced Research in Electronics and Communication Engineering*, 10(5), 12-18.