

AI Based Travel Itinerary System

Amol Pramod Parab¹, Yash Kishor Nadkar², Vighnesh Sanjay Sathe³, Prof. Sanjay N. Jadhav⁴

^{1,2,3}, Department of Computer Engineering

G. M. Vedak Institute of Technology, Tala-Raigad University of Mumbai

Email: parabamol63@gmail.com

⁴ Project Guide Department of Computer Engineering

G. M. Vedak Institute of Technology

Abstract—The AI-Based Travel Itinerary System is an intel- ligent web application designed to simplify trip planning by automatically generating personalized travel itineraries based on user preferences. The system uses Artificial Intelligence to analyze inputs such as destination, travel duration, budget, and interests. It integrates APIs like Google Maps and AI models to provide real-time recommendations including routes, attractions, and accommodations. The system reduces manual effort and enhances travel planning efficiency by generating optimized schedules and cost estimations.

Index Terms—Artificial Intelligence, Travel Planning, Itinerary System, Machine Learning, Web Application

I. INTRODUCTION

In recent years, travel planning has become increasingly complex due to the vast amount of information available across multiple platforms. Travellers often need to search different websites for flights, hotels, attractions, and transportation, which can be time-consuming and inefficient. With the rapid growth of digital services, there is a strong demand for systems that can simplify and automate this process. Artificial Intelligence (AI) has emerged as a powerful solution to address these challenges by enabling intelligent decision-making and personalized recommendations.

The AI-Based Travel Itinerary System aims to provide a smart and automated approach to trip planning by analysing user preferences such as budget, travel duration, destination, and interests. By leveraging advanced technologies and APIs, the system can generate optimized travel plans that include routes, accommodations, and activities. It integrates real-time data from services like maps and weather platforms to ensure accuracy and relevance. This not only reduces manual effort but also enhances the overall travel experience by providing well-structured and efficient itineraries.

Furthermore, the system is designed to be flexible, scalable, and user-friendly, making it suitable for a wide range of users including individual travellers, travel agencies, and tourism companies. It allows users to modify and customize their travel plans easily, ensuring a high level of personalization. By combining AI-driven insights with real-time data, the system aims to transform traditional travel planning into a more efficient, intelligent, and enjoyable process.

II. LITERATURE REVIEW

Travel planning systems have evolved significantly over the years, with many platforms such as TripAdvisor, Expedia, and MakeMyTrip providing services for booking hotels, flights, and tourist activities. These systems offer convenience and accessibility; however, they largely rely on manual user input and provide generic recommendations. Traditional travel agencies also depend on manual processes, which can be time-consuming and may not effectively cater to individual user preferences. As a result, users often face difficulties in creating well-structured and personalized travel plans.

Recent research in the field of Artificial Intelligence (AI) and Machine Learning has shown promising advancements in recommendation systems and automated planning tools. AI-based travel systems utilize algorithms to analyse user data, preferences, and historical patterns to generate personalized suggestions. Integration of APIs such as Google Maps, weather services, and location-based platforms has further enhanced the accuracy and real-time adaptability of these systems. Studies indicate that AI-driven systems can significantly reduce planning time while improving the quality and relevance of travel recommendations.

Despite these advancements, many existing solutions still lack dynamic adaptability and full personalization. Most systems fail to adjust travel plans based on real-time changes such as weather conditions, traffic, or sudden schedule modifications. Additionally, there is limited integration of intelligent decision-making that considers multiple factors simultaneously. Therefore, there is a need for a more advanced AI-based travel itinerary system that can provide fully personalized, adaptive, and efficient travel planning solutions, addressing the limitations of current systems.

III. PROBLEM STATEMENT

In the modern digital era, planning a trip involves searching through multiple platforms for flights, hotels, transportation, and tourist attractions. This process is often time-consuming and requires significant effort to compare options and organize information effectively. Users frequently switch between different applications and websites, which leads to confusion and inefficient planning. As a result, travellers may miss important details or fail to create a well-structured itinerary.

Existing travel planning systems primarily provide generic recommendations and lack the ability to fully understand individual user preferences such as budget, travel duration, interests, and travel style. These systems do not offer personalized solutions and often generate static plans that cannot adapt to changing

conditions. Furthermore, they do not efficiently handle real-time factors such as weather changes, traffic conditions, or unexpected schedule conflicts, which can negatively impact the overall travel experience.

Therefore, there is a need for an intelligent and automated system that can simplify the process of travel planning. The proposed AI-Based Travel Itinerary System aims to address these challenges by generating personalized and dynamic travel plans using artificial intelligence. It focuses on reducing user effort, improving decision-making, and providing efficient, flexible, and real-time travel solutions for a better and more enjoyable travel experience.

IV. OBJECTIVES

The primary objective of the AI-Based Travel Itinerary System is to design and develop an intelligent platform that can automatically generate personalized travel plans based on user preferences. The system aims to simplify the travel planning process by reducing the need for manual searching across multiple platforms. By taking inputs such as destination, budget, duration, and interests, the system will provide optimized itineraries that include routes, accommodations, and activities, ensuring a smooth and efficient travel experience.

Another key objective is to leverage advanced technologies such as Artificial Intelligence and Machine Learning to enhance the quality of recommendations. The system will analyse user behaviour and preferences to generate accurate and relevant travel suggestions. By integrating real-time APIs such as maps and weather services, the system ensures that the generated itineraries are up-to-date, reliable, and adaptable to changing conditions.

The project also aims to improve decision-making by providing users with cost-effective options and optimized schedules. It will suggest nearby attractions, efficient travel routes, and suitable accommodations based on user constraints. This helps users make

informed choices, save time, and manage their travel budget effectively while maximizing their overall experience.

Furthermore, the system is designed to offer a user-friendly and interactive interface that allows users to easily input their travel details and customize their itineraries. Users will be able to modify, save, and revisit their plans, ensuring flexibility and convenience. The platform is also intended to be accessible across multiple devices, including desktops and mobile devices, making it widely usable.

In addition, the system aims to be scalable and adaptable for future enhancements. It can be extended to include features such as multilingual support, predictive analytics, automated bookings, and AI chat assistants. These advancements will further improve the system's capability and ensure that it remains relevant in the evolving travel and technology landscape.

V. SYSTEM ARCHITECTURE

The system architecture of the AI-Based Travel Itinerary System is designed to provide a structured and efficient flow of data between the user interface, backend services, and the AI processing engine. The architecture follows a modular approach where each component performs a specific function, ensuring scalability, flexibility, and ease of maintenance. The system primarily consists of three layers: the user interface layer, the application processing layer, and the data layer.

At the first level, the user interacts with the system through a web-based interface developed using modern frontend technologies. Users input their travel preferences such as destination, budget, duration, and interests. This information is then sent to the backend system for processing. The interface is designed to be responsive and user-friendly, allowing seamless interaction across different devices.

The application layer acts as the core processing unit of the system. It integrates Artificial Intelligence using models such as Google Gemini AI to analyse user inputs and generate personalized travel itineraries. This layer also communicates with external APIs such as Google Maps and weather services to fetch real-time data, including routes, travel time, weather conditions, and nearby attractions. The system processes this information and generates optimized travel plans.

The data layer is responsible for storing user information, preferences, and generated itineraries. Firebase is used as the backend database, providing real-time data synchronization and secure storage. It also manages authentication and ensures that user data is protected. The integration of cloud-based storage ensures scalability and efficient data handling. Additionally, the system supports dynamic updates and adaptability. If there are changes in user preferences or real-time conditions such as weather or traffic, the system can regenerate and adjust the itinerary accordingly. This makes the system intelligent, flexible, and capable of providing accurate and up-to-date travel recommendations.

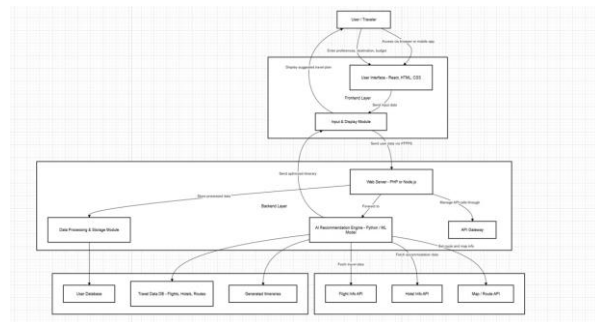


Fig. 1. System Architecture of AI-Based Travel Itinerary System

VI. DATA FLOW DIAGRAM

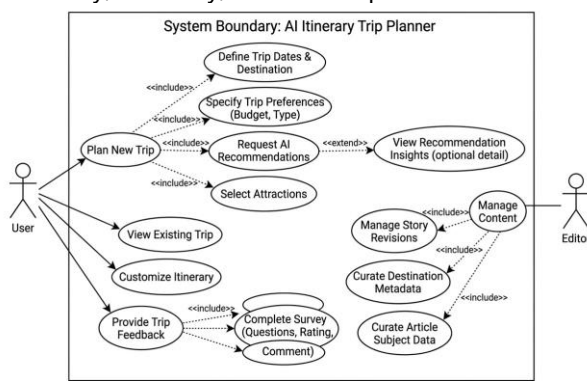
The Data Flow Diagram (DFD) represents the flow of data within the AI-Based Travel Itinerary System. It illustrates how user inputs are processed, transformed, and utilized to generate personalized travel plans. The

DFD helps in understanding the interaction between different components of the system and how data moves between them.

At the initial stage, the user provides input such as destination, budget, duration, and travel preferences through the user interface. This input is sent to the processing unit, where the system analyses the data using Artificial Intelligence algorithms. The AI engine interprets user requirements and prepares a structured request for further processing.

In the next stage, the system communicates with external APIs such as maps, weather services, and location-based platforms to fetch real-time data. This includes information about routes, travel time, nearby attractions, hotel availability, and weather conditions. The collected data is then processed and combined with user preferences to generate an optimized travel itinerary.

Finally, the generated itinerary is stored in the database and displayed to the user through the interface. Users can view, modify, or save their travel plans as needed. The system ensures continuous data flow and updates, allowing dynamic changes in the itinerary based on real-time conditions. This structured data flow improves efficiency, accuracy, and user experience.



Use Case Diagram for AI Itinerary Trip Planner

processes the information and generates a personalized travel plan. The user can also modify, save, and view previously generated itineraries.

The system also interacts with external services such as APIs for maps, weather, and location-based data. These services act as secondary actors that provide real-time information required for accurate itinerary generation. The system uses this data to enhance recommendations and ensure that travel plans are optimized and up-to-date.

Overall, the Use Case Diagram illustrates how different components of the system collaborate to deliver a seamless user experience. It highlights the core functionalities such as user input, itinerary generation, data retrieval, and plan customization, making the system efficient and user-friendly.

VII. SEQUENCE DIAGRAM

The Sequence Diagram illustrates the step-by-step interaction between different components of the AI-Based Travel Itinerary System over time. It shows how the user, system interface, backend processing unit, and external APIs communicate to generate a personalized travel itinerary. This diagram helps in understanding the dynamic behavior of the system and the order in which operations are executed.

The sequence begins when the user enters travel details such as destination, budget, duration, and preferences through the user interface. The interface sends this data to the backend server, where the application processes the request. The backend then forwards the relevant information to the AI engine, which analyses user inputs and prepares a structured request for itinerary generation.

Next, the system interacts with external APIs such as maps, weather, and location services to fetch real-time data. These APIs return necessary information like travel routes, estimated time, nearby attractions, and weather conditions. The backend combines this data with AI-generated insights to create an optimized travel plan tailored to the user's preferences.

Finally, the generated itinerary is sent back to the user interface and displayed to the user. The user can then view, modify, or save the itinerary. This sequence of interactions ensures smooth communication between system components and enables efficient and real-time travel planning.

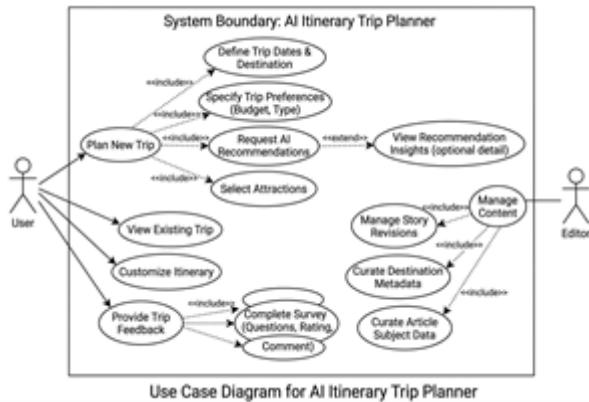


Fig. 2. Data Flow Diagram

VIII. USE CASE DIAGRAM

The Use Case Diagram represents the interaction between users and the AI-Based Travel Itinerary System. It identifies the different types of users and the actions they can perform within the system. This diagram helps in understanding the functional requirements and how users engage with the system to achieve specific goals. The primary actor in this system is the user, who interacts with the application to generate and manage travel itineraries. The user provides travel details such as destination, budget, duration, and preferences. Based on this input, the system.

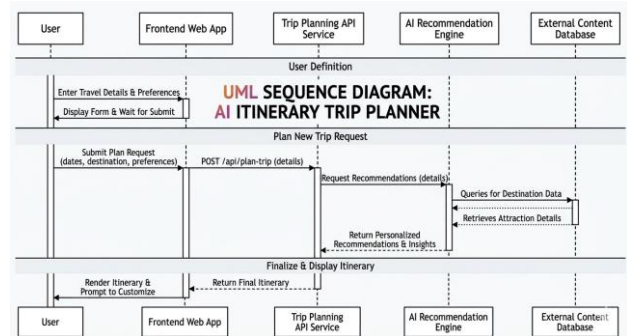


Fig. 3. Sequence Diagram

IX. METHODOLOGY

The methodology of the AI-Based Travel Itinerary System follows a structured software development life cycle to ensure systematic design, implementation, and evaluation of the system. The process begins with requirement gathering and analysis, where user needs such as travel preferences, budget constraints, duration, and destination choices are identified. This phase helps in defining the system objectives and understanding the functional and non-functional requirements necessary for building an efficient solution.

The system design phase focuses on creating a clear architecture that defines the interaction between various components, including the user interface, backend services, artificial intelligence module, and external APIs. Flow diagrams, use case diagrams, and system models are designed to visualize how data moves through the system. This stage ensures that the system is modular, scalable, and capable of handling real-time data efficiently.

During the implementation phase, the frontend is developed using modern technologies such as React and Vite to provide a responsive and interactive user interface. The backend is implemented using Firebase, which manages authentication, database operations, and real-time data synchronization. Artificial Intelligence is integrated using advanced models such as Google Gemini AI to analyse user inputs and generate personalized travel itineraries. Additionally, APIs like Google Maps and weather services are

integrated to fetch real-time information, ensuring accuracy and reliability.

The testing phase is carried out to verify the functionality and performance of the system. Various testing methods such as unit testing, integration testing, and system testing are performed to identify errors and ensure smooth interaction between components. This phase ensures that the system meets user expectations, performs efficiently, and provides accurate results under different conditions.

Finally, the deployment and maintenance phase ensures that the system is made available to users and operates effectively in real-world scenarios. Continuous monitoring is performed to track system performance, while updates and improvements are implemented to enhance functionality. This iterative approach ensures that the system remains reliable, scalable, and adaptable to future technological advancements.

X. REQUIREMENT ANALYSIS

Requirement analysis is a crucial phase in the development of the AI-Based Travel Itinerary System, as it helps in identifying the needs and expectations of users. The system is designed to accept user inputs such as destination, budget, duration, and travel preferences. These inputs form the foundation for generating personalized travel itineraries. The analysis ensures that the system meets user requirements by providing accurate, efficient, and relevant travel recommendations.

The functional requirements of the system define the core features and operations it must perform. These include accepting user input, processing data using artificial intelligence, generating customized itineraries, and allowing users to modify and save their travel plans. Additionally, the system integrates external APIs such as maps and weather services to provide real-time information. These functionalities ensure that the system delivers a dynamic and user-centric experience. The non-functional requirements focus on the performance and quality aspects of the system. These

include ensuring data security and privacy, maintaining high system performance, and providing a user-friendly interface. The system should be scalable to handle multiple users and adaptable to future enhancements. Reliability and responsiveness are also critical to ensure smooth operation. Together, these requirements contribute to building a robust, efficient, and effective travel itinerary system.

XI. RESULTS AND IMPLEMENTATION

The implementation of the AI-Based Travel Itinerary System was successfully carried out using modern web technologies and cloud-based services. The frontend was developed using React and Vite to provide a responsive and interactive user interface. Firebase was used as the backend for handling authentication, database management, and real-time data storage. Artificial Intelligence integration using Google Gemini AI enabled the system to generate personalized travel itineraries based on user inputs such as destination, budget, duration, and preferences.

During the implementation phase, the system was tested with different input scenarios to evaluate its performance and accuracy. The application was able to generate structured travel plans that included recommended places, optimized routes, estimated costs, and daily schedules. The integration of external APIs such as Google Maps and weather services ensured that the generated itineraries were accurate and up-to-date, improving the overall reliability of the system.

The results demonstrate that the system significantly reduces the time and effort required for travel planning. Users can generate customized itineraries within seconds, compared to traditional methods that require manual searching across multiple platforms. The system also provides flexibility, allowing users to modify and save their travel plans according to their preferences.

TABLE I
System Performance Analysis

Parameter	Result
Response Time	Fast (2-3 seconds)
Accuracy of Recommendations	High
User Satisfaction	Improved
System Reliability	Stable

The performance of the system was evaluated based on key parameters such as response time, accuracy, and user satisfaction. The system showed fast response times and high accuracy in generating relevant travel recommendations. The use of cloud-based services ensured that the system remained stable and accessible.

Overall, the implementation results indicate that the system is efficient, reliable, and capable of providing intelligent travel

TABLE II
 Technology Stack Used

Component	Technology
Frontend	React, Vite
Backend	Firebase
AI Model	Google Gemini AI
APIs	Google Maps, Weather API
Database	Firebase Realtime Database

planning solutions. The integration of AI and real-time data enhances the user experience and ensures that the generated itineraries are practical and effective. The system can be further improved by adding advanced features such as real-time booking and predictive recommendations.

XII. CONCLUSION

The AI-Based Travel Itinerary System successfully demonstrates how artificial intelligence can be utilized to simplify and enhance the process of travel planning. The system is capable of generating personalized and optimized travel itineraries based on user preferences such as destination, budget, duration, and interests. By integrating modern technologies and real-time APIs, the system provides accurate, efficient, and user-friendly solutions, reducing the complexity and time required for manual planning.

The implementation of the system using technologies such as React, Firebase, and Google Gemini AI ensures high performance, scalability, and reliability. The integration of external services like Google Maps and weather APIs further enhances the quality of recommendations by providing real-time data. The results show that the system improves user experience by offering structured travel plans, cost estimation, and flexibility to modify itineraries as needed.

In conclusion, the project highlights the effectiveness of combining artificial intelligence with web technologies to create intelligent applications. The system not only meets current user requirements but also provides a foundation for future enhancements such as automated booking, multilingual support, and predictive travel suggestions. This makes the AI-Based Travel Itinerary System a valuable and practical solution for modern travel planning needs.

REFERENCES

1. AI-Powered Travel Planner System, ResearchGate, 2025.
2. International Journal of Research and Analytical Reviews (IJRAR), "AI in Travel Planning Systems," 2024.
3. International Journal of Innovative Research in Technology (IJIRT), "Smart Travel Recommendation System," 2023.

4. Google Maps Platform Documentation. [Online]. Available: <https://developers.google.com/maps>
5. Firebase Documentation. [Online]. Available: <https://firebase.google.com/docs>
6. Google Gemini AI Documentation. [Online]. Available: <https://ai.google.dev/>
7. Amazon Web Services Documentation. [Online]. Available: <https://docs.aws.amazon.com/>
8. Ian Goodfellow, Yoshua Bengio, and Aaron Courville, Deep Learning. MIT Press, 2016.
9. Stuart Russell and Peter Norvig, Artificial Intelligence: A Modern Approach. Pearson, 2010.